



## **Formal Apprenticeships for Careers in Agriculture**

Franklin Egan, Education Director  
[franklin@pasafarming.org](mailto:franklin@pasafarming.org)  
814-349-9856, ext 707

# About Pasa



Farmer-to-Farmer  
Education

## Research & Technical Support

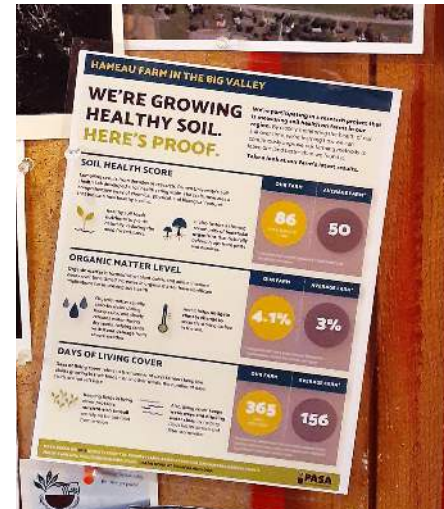


Apprenticeship &  
Training



# Farming is a Rewarding Career:

- Independent and entrepreneurial work.
- Serving communities by providing healthy food.
- Protecting soil, water, and climate resources for future generations.



# Challenges and Opportunities for our Region's Agriculture

- **Pennsylvania agriculture is a \$7.8 billion industry.**
- **Over 52,000 mostly family-owned farm businesses.**
- **For every 3 farmers over 65, there is only 1 under 35.**
- **New markets and products.**

# The Formal Apprenticeship Model

1. Paid On-the-Job Training

2. Technical Instruction

Employer



3.

Apprentice

“Industry Sponsor”



# DAIRY GRAZING APPRENTICESHIP

**1st Formal apprenticeship for farm management  
in the U.S.**

PASA Dairy Grazing Apprentice Jessica Matthews,  
Hameau Farm in Belleville, PA.



## Program Highlights

- Focus on managed grazing
- Active in 12 states
- 175 mentor graziers
- 45 active apprentices



# DAIRY GRAZING APPRENTICESHIP

**1st Formal apprenticeship for farm management  
in the U.S.**



## **Program Highlights**

- 4,000 hr., 2 year program
- 3,700 hr., on-the-job-training
- 300 hr. technical instruction
- \$8/hr. minimum wage



# Diversified Vegetable Apprenticeship

## Program Highlights

- Focus on sustainability through diversification
- 19 mentor growers
- 7 active apprentices
- Steadily expanding farmer network





# Diversified Vegetable Apprenticeship



## Program Highlights

- 3,000 hr., 2 year program
- 2,800 hr. on-the-job training
- 200 hr. technical instruction
- \$8/hr. minimum wage



# Where can you go with a farm apprenticeship and a journeyworker certificate?

- ~ 75% of Journeyworkers become salaried farm managers or start their own farm businesses.
- Farm owners can expect to earn \$23k to \$156k per year.
- Farm owners often build significant wealth (\$23k to \$2.1M) in their businesses.
- Journeyworkers also move onto to productive careers as ag consultants, scientists, or advocates.
- Exit surveys report strong satisfaction.





THANK YOU!

[www.pasafarming.org](http://www.pasafarming.org)

Franklin Egan, Education Director

[franklin@pasafarming.org](mailto:franklin@pasafarming.org)

814-349-9856, ext. 707